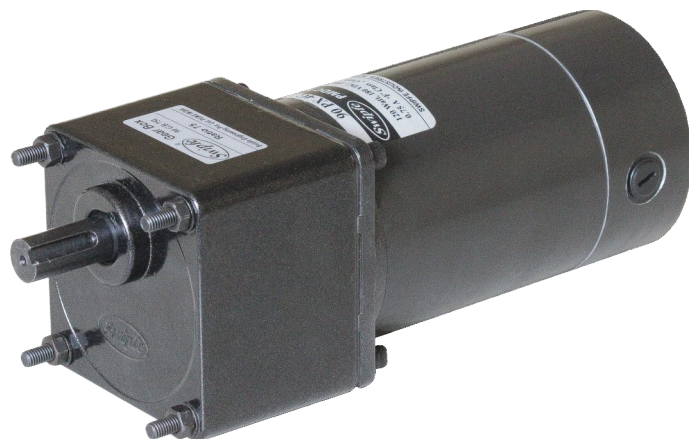


PMDC Motor

120 Watt

Square Flange
90mm x 90mm

Replaceable Carbon Brush Permanent Magnet Motor
Rotates in Clockwise or Counter Clockwise Direction
Continuous Rating, Lead Wires for Connection



Motor Specifications:

Model	Supply	Current Amp	Rated Torque Nm	Rated Speed RPM
5PW4□120	24V	7.0	0.61	1800
5PX4□120	180V	0.85	0.61	1800

□ Indicates type of Shaft, G - Gear, R - Round, F - Frame, C - Custom

Gearmotor Torque Table:

The maximum permissible torque is 20 Nm
Rated speed of Motor is approx. 1800RPM

RPM	600	500	360	300	240	200	144	120	100	72	60	50	36	30	24	20	18	15	12	10
Gear Ratio	3	3.6	5	6	7.5	9	12.5	15	18	25	30	36	50	60	75	90	100	120	150	180
Output Torque	1.5	1.8	2.5	3.0	3.8	4.5	5.7	6.8	8.5	10.3	12.3	14.8	18.5	20.0	20.0	20.0	20.0	20.0	20.0	20.0

The Gear boxes are sold separately.

A coloured background indicates gear shaft rotation in same direction as motor shaft.

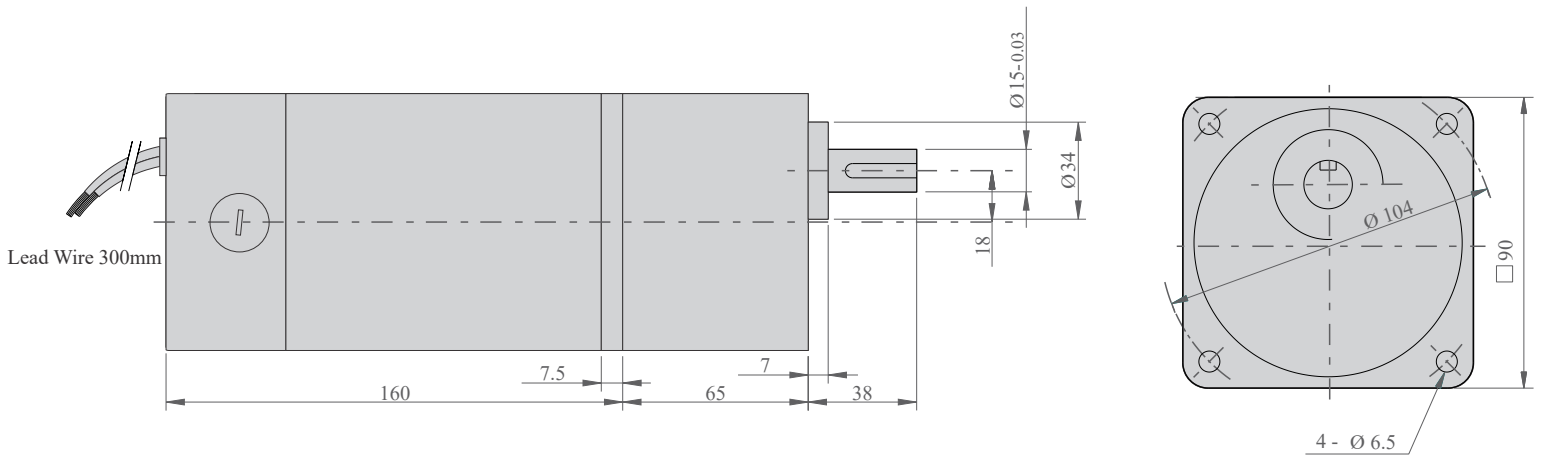
A white background indicates gear shaft rotation in opposite direction to the motor shaft.

The speed of geared motor is calculated by dividing motor's no load speed by the gear ratio.

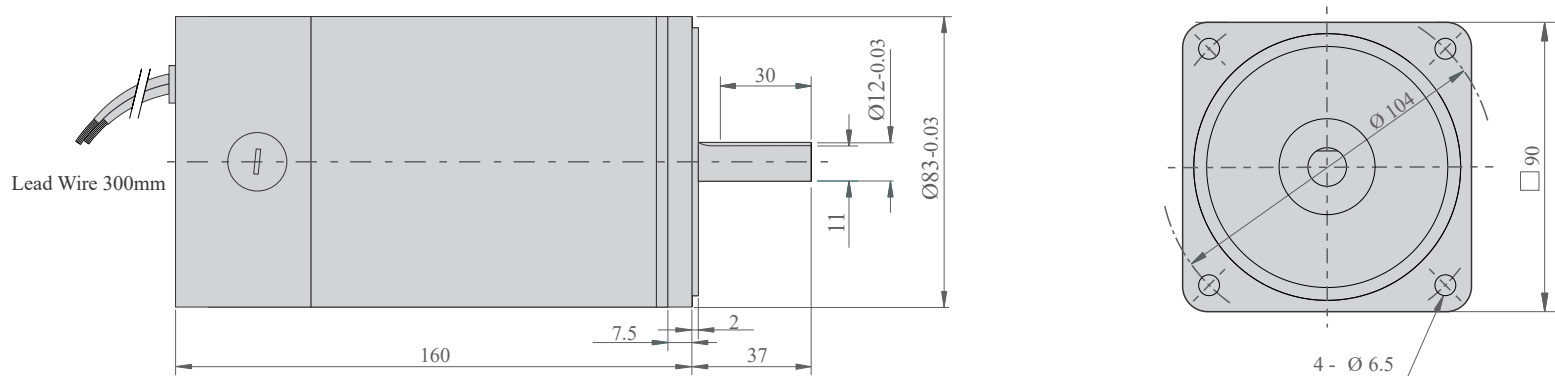
The actual speed is less than the displayed value, depending upon the load.

Characteristics, specifications and dimensions are subject to change without notice.

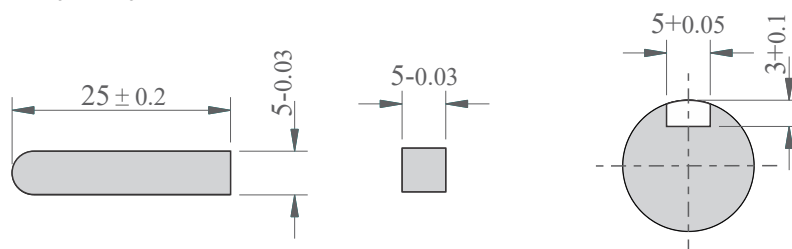
Dimensions: Motor with Gearbox



Motor Round Shaft



Key & Keyway



Max. Weight:
Motor - 2.8 kg
Gear Box - 1.75 kg

Power Supply Connection:

To rotate the motor in clockwise direction, connect red wire to positive supply and black wire to negative supply.

To reverse the direction interchange the wires.